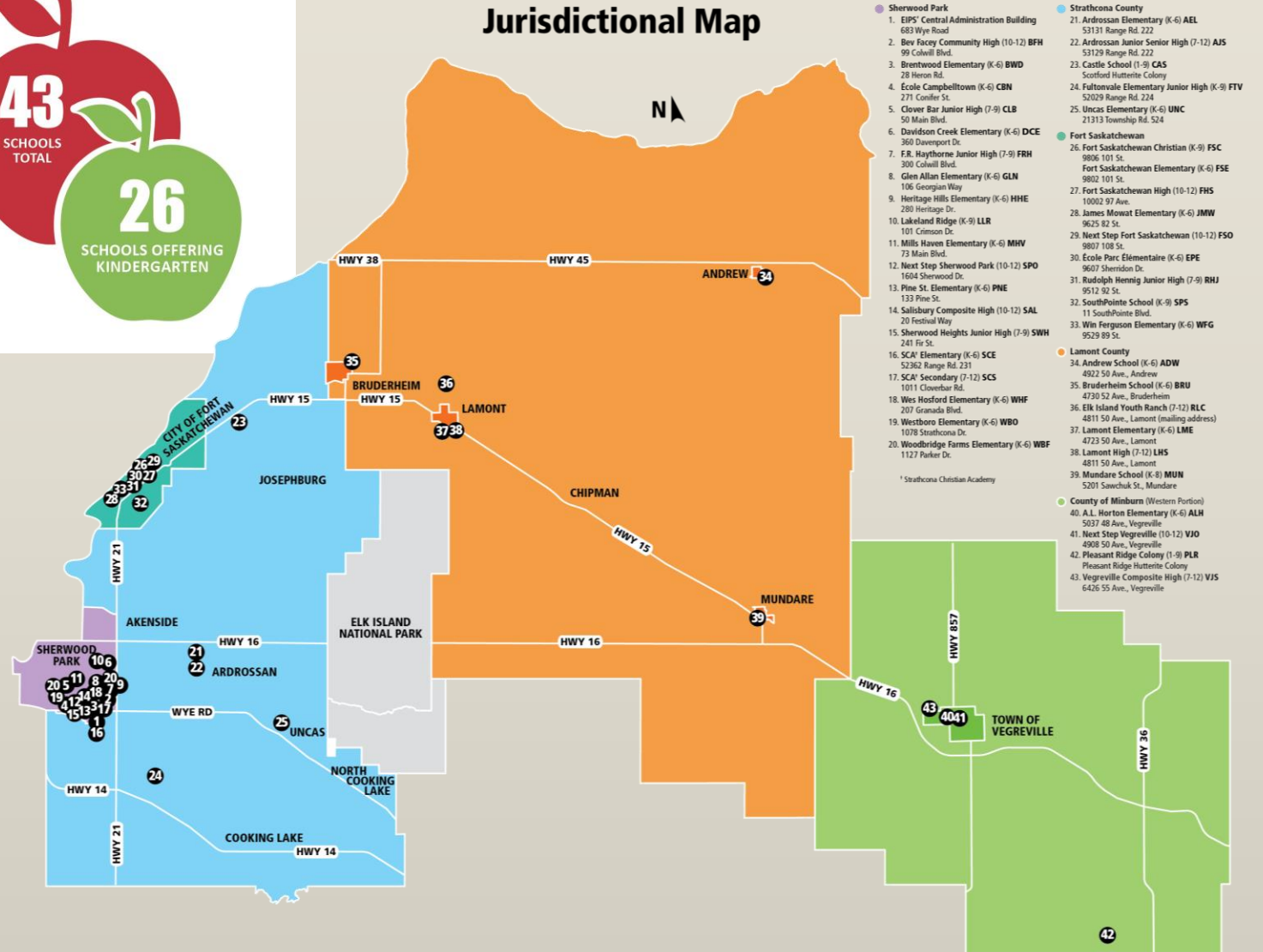
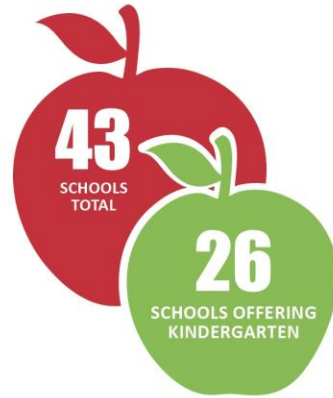




Welcome to
KINDERGARTEN!

Elk Island Public Schools (EIPS) serves:

- Sherwood Park
- Fort Saskatchewan
- Strathcona County
- Lamont County
- Western Portion of the County of Minburn





Literacy-rich, play-based programming



Curriculum Areas

- English Language Arts & Literature
- Mathematics
- Physical Education and Wellness
- Science
- Social Studies
- Fine Arts

New Kindergarten Curriculum

New kindergarten curriculum implemented:

- Mathematics (2022-23)
- English Language Arts & Literature (2022-23)
- Physical Education and Wellness (2022-23)
- Science (2023-24)
- French Immersion Language Arts and Literature (2023-24)

•Future kindergarten curriculum implementation:

- Social Studies (anticipated 2025-26)
- Fine Arts (to be determined)

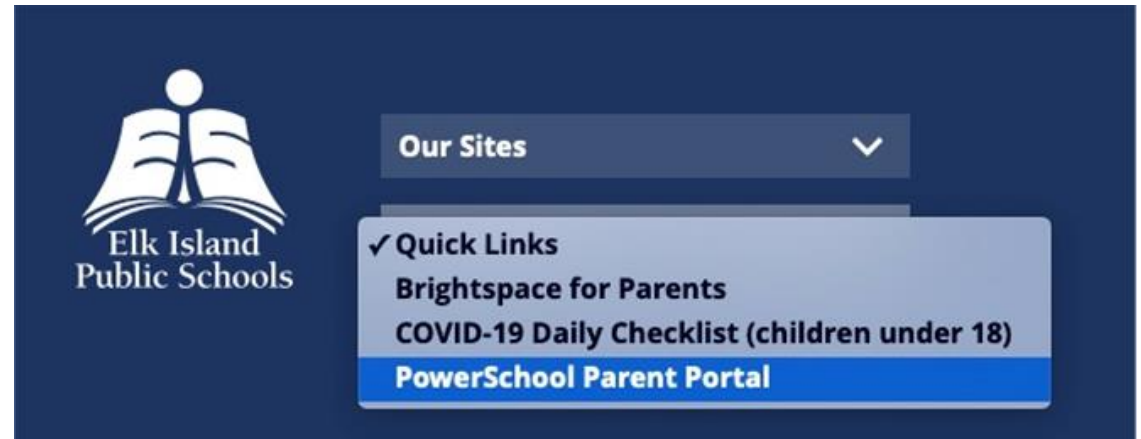
Learn more at

curriculum.learnalberta.ca/curriculum/en



PowerSchool Parent Portal

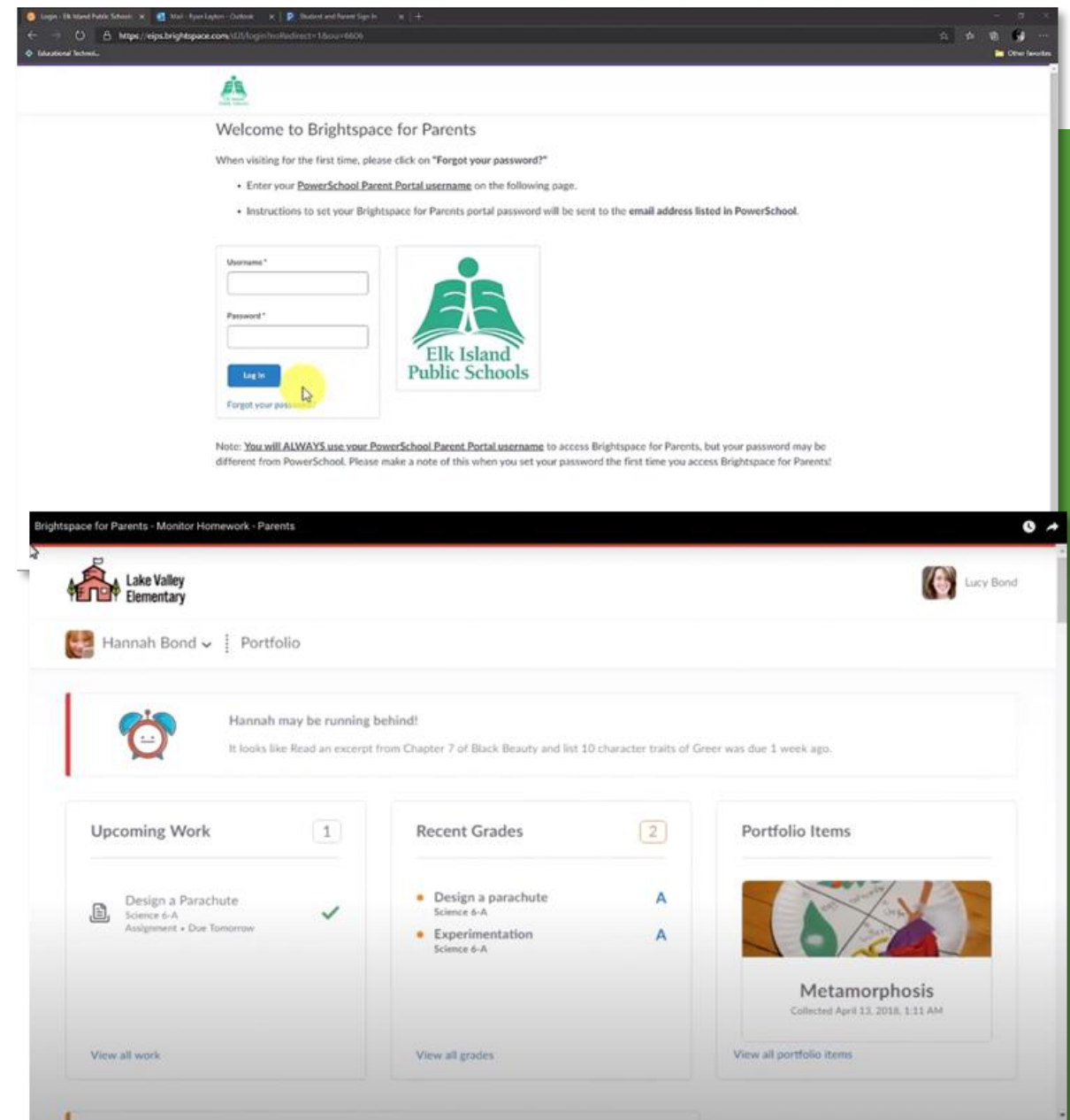
- Online access to your child's progress report cards, attendance and school fees
- One Parent Portal account to link all children in the family together
- Your account follows each student as they move through the Division



Learn more at eips.ca/parents/powerschool

Brightspace

- Online access to classroom updates, upcoming assignments, feedback from teachers and communication from the school and teacher, as applicable
- Separate portal access for parents and students
- One Brightspace for Parent & Guardian account to link all children in the family together
- Your account follows each student as they move through the Division



Learn more at eips.ca/parents/brightspace

SchoolMessenger

- EIPS uses the SchoolMessenger system for sending information to families by phone and email—including bus cancellations or delays, inclement weather, upcoming events, school newsletters, parental engagement opportunities, emergency notices and more.
- Families can manage their subscription preference through their SchoolMessenger account.
- Download the app to stay connected on the go.

Learn more at eips.ca/contact/subscribe



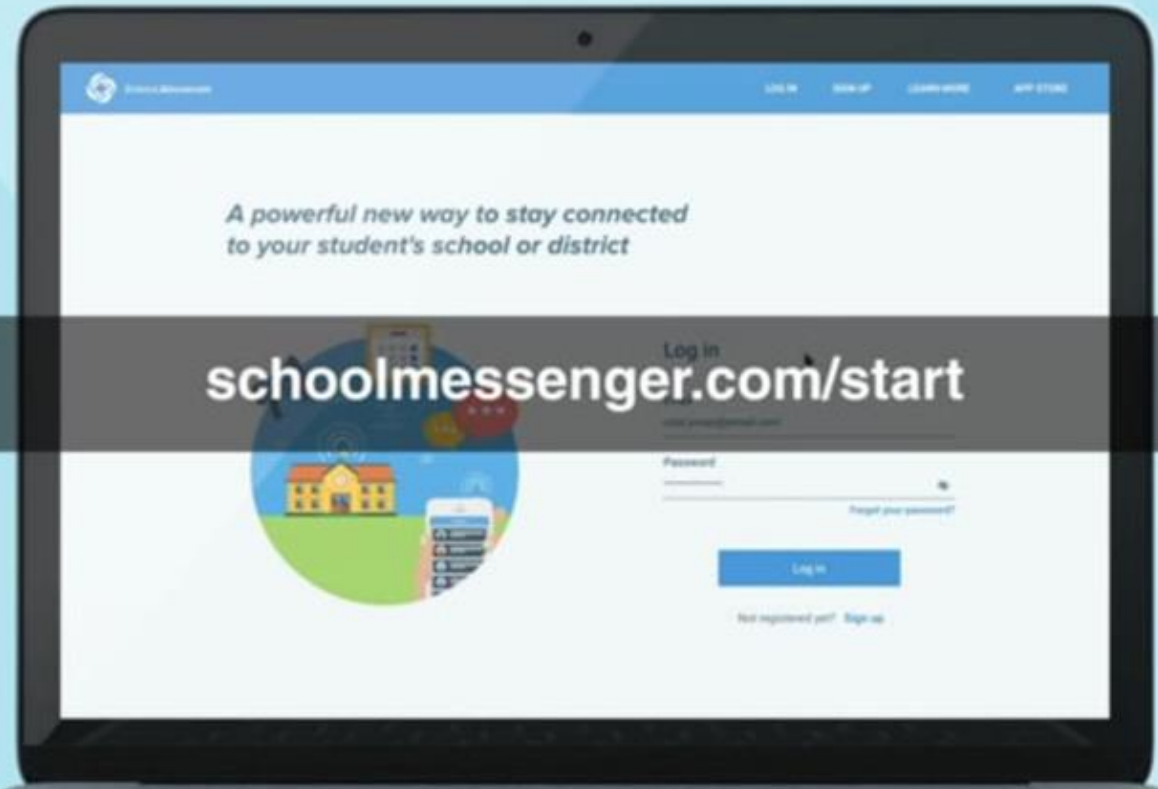
SCHOOLMESSENGER®



Download on the
App Store



ANDROID APP ON
Google play



Permission Click

- EIPS uses the online Permission Click platform for many school and Division forms.
- Forms are easily accessible and fillable from mobile devices. No log in required.
- Emails will come from Permission Click

Add notifications@permissionclick.com to your safe-sender list to ensure required forms aren't mistakenly directed to your junk mail folder.

Permission **CLICK**



Student Transportation

- Bus routes
- Bus passes
- Transportation fees
- Little Elk Island Adventure
- First day of kindergarten busing: September 4

Transportation fees are due June 30, 2025 and are paid online at:

eips.ca/transportation/transportation-fees/student-transportation-online-payments



Student Transportation: Little Elk Island Adventure

Students and parents learn:

- How to be safe when around the bus
- What the Danger Zone is and where it is located
- How to board the bus and scan their bus pass
- How to sit properly on the school bus
- EIPS' Code of Conduct

Learn more at

eips.ca/transportation/little-elk-island-adventure



SCHEDULE A:
Mondays, Thursdays
and select Wednesdays

SCHEDULE B:
Tuesdays, Fridays
and select Wednesdays

Important Dates

Aug 26	Professional Learning Day
Aug 27	Operational Day
Aug 28	First Instructional Day Schedule A
Aug 29	First Instructional Day Schedule B
Sept 1	Labour Day - holiday
Sept 4	First Day of Kindergarten Busing
Sept 30	National Day for Truth and Reconciliation - Division closure
Oct 3	Professional Learning Day
Oct 13	Thanksgiving Day - holiday
Nov 10 - 14	November Break
Nov 11	Remembrance Day - holiday
Nov 17	Classes Resume
Dec 22 - Jan 2	Christmas Break
Dec 25	Christmas Day - holiday
Jan 1	New Year's Day - holiday
Jan 5	Classes Resume
Jan 28	Professional Learning Day
Feb 5 - 6	North Central Teachers' Convention
Feb 16	Family Day - holiday
Mar 6	Professional Learning Day
Mar 23 - 27	Spring Break
Mar 30	Classes Resume
Apr 3	Good Friday - holiday
Apr 6	Easter Monday - Division closure
May 1	Professional Learning Day
May 18	Victoria Day - holiday
June 21	National Indigenous Peoples Day
Jun 22	Last Instructional Day Schedule A
Jun 23	Last Instructional Day Schedule B
Jun 24	Operational Day

■ No School for All Students and Staff

○ Early Dismissal for Students
- one hour early every Wednesday

☆ First Day of Class

■ No School for Students
- Professional Learning Day/Operational Day

AUGUST 2025

S	M	T	W	T	F	S
					1	2
3	4	5	6	7	8	9
10	11	12	13	14	15	16
17	18	19	20	21	22	23
24	25	26	27	28	29	30
31						

OCTOBER 2025

S	M	T	W	T	F	S
			1	2	3	4
5	6	7	8	9	10	11
12	13	14	15	16	17	18
19	20	21	22	23	24	25
26	27	28	29	30	31	

DECEMBER 2025

S	M	T	W	T	F	S
	1	2	3	4	5	6
7	8	9	10	11	12	13
14	15	16	17	18	19	20
21	22	23	24	25	26	27
28	29	30	31			

FEBRUARY 2026

S	M	T	W	T	F	S
1	2	3	4	5	6	7
8	9	10	11	12	13	14
15	16	17	18	19	20	21
22	23	24	25	26	27	28

APRIL 2026

S	M	T	W	T	F	S
			1	2	3	4
5	6	7	8	9	10	11
12	13	14	15	16	17	18
19	20	21	22	23	24	25
26	27	28	29	30		

JUNE 2026

S	M	T	W	T	F	S
	1	2	3	4	5	6
7	8	9	10	11	12	13
14	15	16	17	18	19	20
21	22	23	24	25	26	27
28	29	30				

SEPTEMBER 2025

S	M	T	W	T	F	S
	1	2	3	4	5	6
7	8	9	10	11	12	13
14	15	16	17	18	19	20
21	22	23	24	25	26	27
28	29	30				

NOVEMBER 2025

S	M	T	W	T	F	S
						1
2	3	4	5	6	7	8
9	10	11	12	13	14	15
16	17	18	19	20	21	22
23	24	25	26	27	28	29
30						

JANUARY 2026

S	M	T	W	T	F	S
					1	2
3	4	5	6	7	8	9
10	11	12	13	14	15	16
17	18	19	20	21	22	23
24	25	26	27	28	29	30
31						

MARCH 2026

S	M	T	W	T	F	S
1	2	3	4	5	6	7
8	9	10	11	12	13	14
15	16	17	18	19	20	21
22	23	24	25	26	27	28
29	30	31				

MAY 2026

S	M	T	W	T	F	S
					1	2
3	4	5	6	7	8	9
10	11	12	13	14	15	16
17	18	19	20	21	22	23
24	25	26	27	28	29	30
31						

JULY 2026

S	M	T	W	T	F	S
			1	2	3	4
5	6	7	8	9	10	11
12	13	14	15	16	17	18
19	20	21	22	23	24	25
26	27	28	29	30	31	

EIPS offers full-day programming on alternating days.

- Monday, Thursday and **select** Wednesdays, or
- Tuesday, Friday and **select** Wednesdays

Find the Division calendar at eips.ca/calendar

Visit the calendar page on the school's website for school-specific dates and events.

475
instructional
hours
per year

Kindergarten Staggered Entry 2025-26

The first four days of school, kindergarten students will come for one small-group staggered entry so that they can learn classroom routines, meet school staff, and become familiar with the learning environment in a small group setting. Mrs. Leitch has emailed families which session their child will attend for their small group staggered entry.



Staggered Entry Days:

- ❖ Thursday, August 28
- ❖ Friday, August 29
- ❖ Tuesday, September 2
- ❖ Wednesday, September 3

- Thursday, September 4 **group A** students will attend their first full day.
- Friday, September 5 **group B** students will attend their first full day.

Introductions

Mr. Tracey Arbuthnott
Principal





Introductions

Mrs. Rachelle Gagnon
Assistant Principal



Introductions

Ms. Sasha Ball
School Counsellor



School Office Team



Mrs. Lisa Waselenkoff
Business Manager



Mrs. Lisa Leitch
School Registrar



Introductions

Ms. Jennifer Appleby
Kindergarten Teacher



Bell Schedule

- Our bell schedule is available on our school website.
- The bell to enter the school is at 8:25 a.m. School starts at 830 a.m. and students are dismissed at 3:15 p.m.
- Every Wednesday is early dismissal day. Students will be dismissed at 2:15 p.m.

Pine Street Elementary

BELL SCHEDULE 2025-26

REGULAR DAY		EARLY DIMISSAL WEDNESDAYS	
ENTRANCE BELL	8:25	ENTRANCE BELL	8:25
PERIOD 1	8:30 - 9:03	PERIOD 1	8:30 - 8:57
PERIOD 2	9:03 - 9:36	PERIOD 2	8:57 - 9:24
PERIOD 3	9:36 - 10:09	PERIOD 3	9:24 - 9:51
RECESS	10:09 - 10:24	RECESS	9:51 - 10:06
PERIOD 4	10:24 - 10:57	PERIOD 4	10:06 - 10:33
PERIOD 5	10:57 - 11:30	PERIOD 5	10:33 - 11:00
LUNCH-EATING	11:30 - 12:00	LUNCH-EATING	11:00 - 11:30
LUNCH-RECESS	12:00 - 12:30	LUNCH-RECESS	11:30 - 12:00
PERIOD 6	12:30 - 1:03	PERIOD 6	12:00 - 12:27
PERIOD 7	1:03 - 1:36	PERIOD 7	12:27 - 12:54
PERIOD 8	1:36 - 2:09	PERIOD 8	12:54 - 1:21
PERIOD 9	2:09 - 2:42	PERIOD 9	1:21 - 1:48
PERIOD 10	2:42 - 3:15	PERIOD 10	1:48 - 2:15
DISMISSAL	3:15	DISMISSAL	2:15

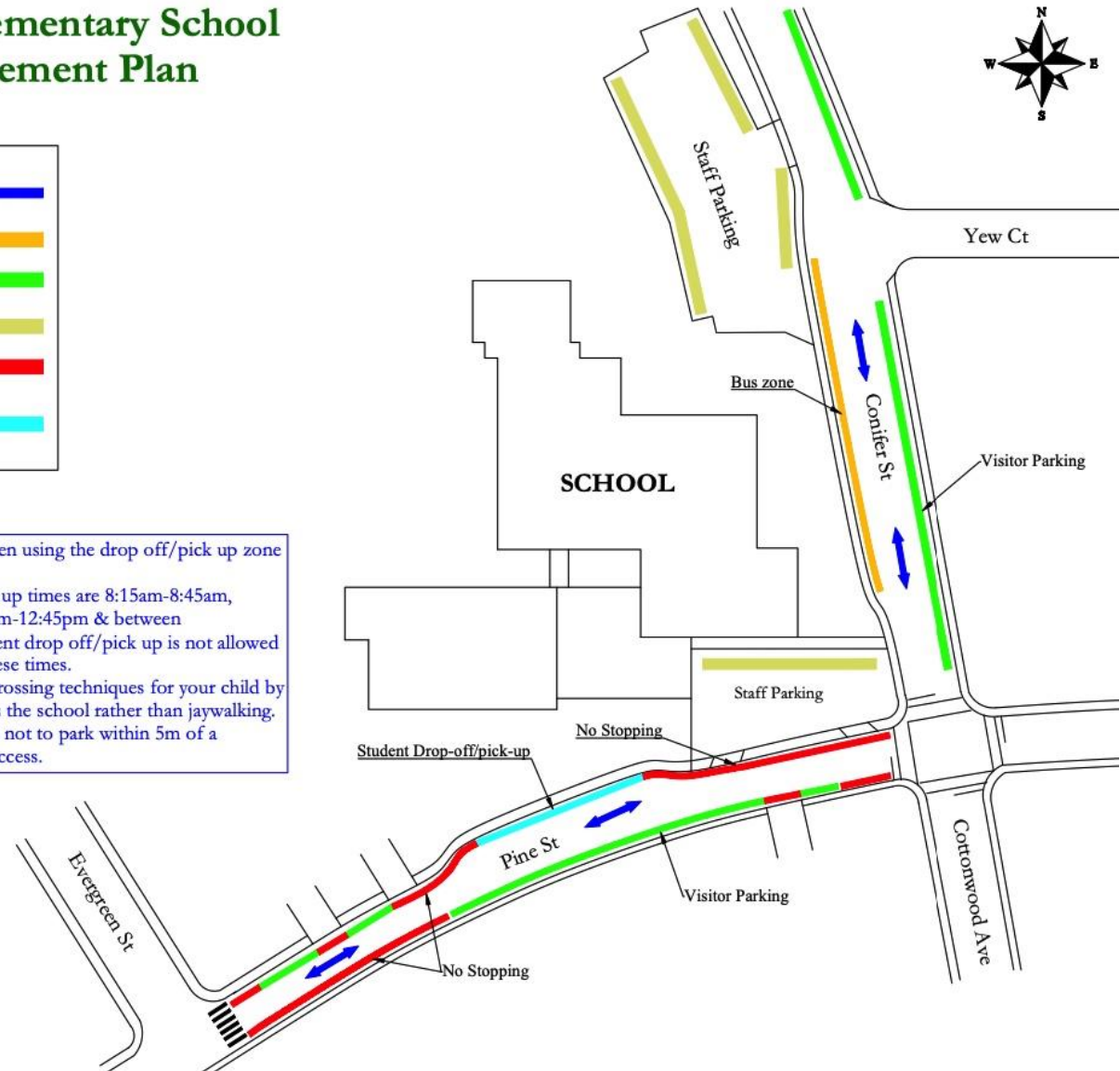
Student Drop Off and Pick Up

- Please stay in your car in the drop off/pick up zone in front of the school.
- Demonstrate road safety for your child by using the crosswalks.
- Bus zones and staff parking lots are not intended for student drop off and pick up.

Pine Street Elementary School Traffic Management Plan



- Please stay in your car when using the drop off/pick up zone in front of the school.
- School bus drop off/pick up times are 8:15am-8:45am, 11:00am-11:30am, 12:15pm-12:45pm & between 3:00pm-3:30pm and Student drop off/pick up is not allowed from Bus Zone during these times.
- Please demonstrate safe crossing techniques for your child by using crosswalks to access the school rather than jaywalking.
- Parents are also requested not to park within 5m of a crosswalk or parking lot access.



Typical Kindergarten Day

- In this video, Ms. Appleby shares what makes up a typical day in kindergarten.

https://www.youtube.com/watch?v=4_goppLE9Og





School Supplies

- The Kindergarten School Supplies list is available on our school website.



Tools for School is a program from the United Way that provides backpacks filled with school supplies to students in kindergarten to Grade 12 whose families have limited resources. The supplies provided may not be everything that's on your child's supply list, but it's a start.

If you would benefit from the Tools for School program, contact the school office.

School Fees

- School fees are paid online through the PowerSchool Parent Portal.
- Fees are assessed at the start of the year and approved by the Board of Trustees.
- Others may be added throughout the year as your child takes part in various activities, such as field trips, hot lunch, school performances, etc.
- Fees are generally due within 30 days of being assessed
- Fee waiver policy – If circumstances exist where you are unable to pay your fees, you can apply to have certain fees waived. The application deadline is December 15.

Learn more at eips.ca/schools/fees





Parent Involvement

- School Council – Attend meetings to stay informed on school events, share ideas, ask questions and learn about all the great things happening at Pine Street Elementary.
- Fundraising Society – Have a fundraising idea? Want to get involved to support a school initiative? Reach out to our Fundraising Society at pinestreetsvp@gmail.com.
- Parent volunteers – Ms. Appleby loves having family helpers in the classroom. We believe Parents/Families are partners.



Preparing for Kindergarten



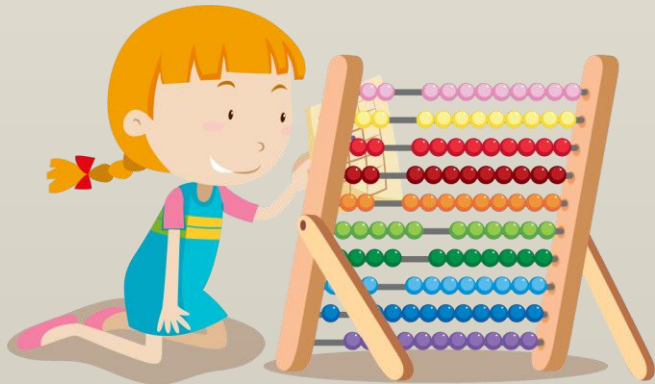
Communication and literacy



Motor skills



Social-emotional development



Numeracy



Self-help skills



Eye See, Eye Learn

Preparing for Kindergarten

- Literacy: explore print in everyday life, provide opportunities to interact with letters, recite rhymes and songs, read together.
- Numeracy: explore shapes, count often, simple dice and card games, practice sorting.
- Motor skills: printing and drawing, creation station, puzzles, outdoor play.
- Self-help: age-appropriate chores, build independence, practice dressing/undressing outdoor clothes and putting shoes on/off.
- Social emotional: stimulate curiosity and enthusiasm for learning, be positive about school, build emotional vocabulary, navigate feelings of disappointment and frustration, practice turn-taking and sharing.





Preparing for Kindergarten

- Book an eye assessment/exam before your child start kindergarten to diagnose any vision or eye-health problems.
- Visit these sites for more information:
 - <https://www.eips.ca/programs-services/early-learning/kindergarten/preparing-for-kindergarten>
 - <https://www.eips.ca/programs-services/early-learning/kindergarten/frequently-asked-questions>



Preparing for Kindergarten Series

- EIPS, together with local partners, is planning a series of videos and resources for kindergarten families to help prepare for the year ahead.
- Families will receive information through a series of emails sent in May and June.
- Watch your inbox for details. Prizes available to be won!

Early Years Evaluation – Teacher Assessment (EYE-TA)

- Administered in the fall and families receive a copy of their child's results.
 - Uses teachers' regular observations and informal assessments in a play-based environment.
 - Helps determine a child's progress and development in five key areas:
 - Awareness of self and environment;
 - Social skills and approaches to learning;
 - Cognitive skills;
 - Language and communication; and
 - Physical development
 - Assessment findings used to help plan instruction for the entire class, for small groups and for individual student's needs.
- § Parent sessions providing more details and explanation will be available in the fall





Helpful Links

- eips.ca/kindergarten
- Facebook: facebook.com/ElkIslandPublicSchools
- School Website: www.pinestreet.ca
- Twitter: @PNE School
- Ms. Appleby's Classroom Twitter: @MrsAppleby_k
- Alberta Education curriculum: curriculum.learnalberta.ca/curriculum/en

Specialized Supports Informed Consent

School and Program Preference

Enrolling Grade required i

Kindergarten



Review Kindergarten Specialized Supports Informed Consent

☐ I have read and understand the Kindergarten Specialized Supports Informed Consent. required

Please choose from the two options below regarding Kindergarten supports screening for your child. required

☐ Accept Screening

☐ Decline Screening

Refer to the [Kindergarten Calendar](#) information for the 2024-2025 schedule options, then return to this form and select your kindergarten schedule preference. The selected preference is taken into account but is not guaranteed.

Speech-Language Pathology (SLP) Services

- SLPs in kindergarten provide the following services, as needed:
 - Informal classroom-based speech and language screening
 - Speech and language assessment to identify need for further services
 - Followup intervention or consultation for children transitioning from preschool programs
 - Direct intervention and consultation based on identified needs
 - Parent consultation

Occupational Therapy (OT) Services

- OTs informally screen students' participation in the classroom setting and provide universal strategies to the classroom staff.
- Service is primarily consultative, providing resources to classroom staff and parents when needed. Students with mild to moderate needs will be primarily served through these general classroom suggestions.
- OTs may have more direct involvement with children who have significant needs in the areas of self-care, regulation and motor skills.

Family and Community Services



Visit: strathcona.ca/fcs

Phone: 780-464-4044

Location: 401 Festival Lane,
Sherwood Park (Community Centre,
Second Floor)

Office Hours:

Monday, Wednesday and Friday

8:30 a.m. to 4:30 p.m.

Tuesday and Thursday

8:30 a.m. to 8 p.m.

Is my child ready for Kindergarten?

Family Resource Network: Ages and Stages Questionnaire (ASQ)

Starting school is a big change for many children and parents/caregivers play a critical role in supporting their success. The ASQ is one tool that might help.

What is it?

- A series of questionnaires designed to help you monitor your child's physical, mental, and emotional development at regular intervals from 2 months to 5 years old.

You can complete both the Ages and Stages Questionnaire (ASQ-3) and the Social-Emotional Questionnaire (ASQ:SE-2) online at **strathonca.ca/agesandstages**.

Once completed you will be contacted by a Family Resource Facilitator with the results and provided additional information to continue promoting your child's development.

Questions? Email familyresourcenetwork@strathcona.ca or call 780-464-4044

Questions?

Contact the school
at 780-467-2246.

We look forward to
seeing your child
and getting to
meet our new
families.

